

UFIP
EAR-RELATED CYMBALS

PLAY THE DIFFERENCE

CYMBALS & PERCUSSIONS
COMPLETE GUIDE

INDEX

02 — the tuscan touch

04 — drumset cymbals

04 — est. 1931 series

06 — vibra series

08 — bionic series

10 — class series

12 — class brilliant series

14 — natural series

16 — experience collection

22 — effects collection

28 — supernova series

30 — tiger series

32 — m8 series

34 — marching & symphonic

38 — sounds & percussions

46 — gongs & tam tams

50 — tuned instruments

Since 1931, from the heart of Tuscany, UFIP produces the finest cymbals in the world. What sets UFIP apart from all the rest is its unique casting process, called Rotocasting®. While every other cymbal available on the market is the result of a process of rolling and subsequent force pressing, UFIP professional B20 Rotocast cymbals are created through a procedure of centrifuge-casting. This process ensures the removal of all the impurities present in the alloy bronze, granting at the same time a greater thickness of the bell compared to those cymbals obtained by simple rolling and pressing. UFIP cymbal is a truly unique instrument; from casting to tempering, hammering to finishing every process is completed by hand, with machinery only ever being used in support of our skilled and dedicated Cymbal Smith. The result is an instrument that is as individual as you are as a drummer. UFIP is not a mass product; it has been created using the finest, purest and most sonorous bell bronze B20 (20% tin, 80% Copper). No other alloy can offer such a tonal character and dynamic range. For your next cymbal don't choose by name... Trust your ears!

>> PLAY THE DIFFERENCE

— a history
of passion

THE
TUSCAN
TOUCH

— Est. 1931 series

Attention to the details and dedication to the drummers is what aims our work!

After a long process of research and experimentation, the new “Est. 1931 Series” is here, as a tribute to the year of our company’s foundation. “Est. 1931” cymbals are dry, smooth, warm with a traditional sound, but updated to perfectly fit the new modern music style.

Crashes are dark, warm, smoky, soft, very low pitched, with a soft response and short sustain. Rides are extremely dry, musical, very controllable with an excellent stick definition, but still crashables.

Hi Hats feature a warm chick, dry sound, good response and great control. It’s a versatile Hi Hat for acoustic music style.

	14"	15"	16"	17"	18"	19"	20"	21"	22"
CRASH			⊙	⊙	⊙	⊙	⊙		
RIDE							⊙		⊙
RIDE SIZZLE								⊙	
HI HAT	⊙	⊙							

main features

// **ALLOY.** Cast Bronze B20

// **PRODUCTION.** Cast using the Rotocasting® Procedure, especially designed with a small bell for a perfect control, hand hammered, fine tuning. //

LEVEL. Professional. //

APPLICATION. Traditional and modern Jazz, Big band, Funk, Pop, Drum and Bass and all the acoustic and modern music styles.

// **SOUND.** Dry, smooth, warm, soft sound, with frequencies concentrated in the low range.

NEW
X2018



vibra series

Designed in close cooperation with Adriano Molinari (Zucchero), one of our main endorsers, the Vibra move from the concept of the Blast Crash, evolving into a more contemporary and unique sound.

The special hammering process applied to the Vibra is based on the traditional UFIP hand manufacturing method, but with a more intense labour process, to create that special UFIP Vibra tone.

This hammering procedure, together with a unique appearance, confers to the Vibra an incredible sound.

The crashes are explosive, with great attack and medium decay. The Rides are controlled with a good stick definition, while the Hi Hats are powerful, dynamic and designed to meet any music style.

main features

// **ALLOY.** Cast Bronze B20.

// **PRODUCTION.** Cast using the Rotocasting® process. Completely handmade. Hand hammered with a special double cross procedure.

// **LEVEL.** Professional.

// **APPLICATION.** Pop, Fusion, Acoustic, World Music, Rock.

// **SOUND.** Fast and dynamic, modern and mellow.



14" 15" 16" 17" 18" 19" 20" 21" 22"

CRASH			⊙	⊙	⊙	⊙	⊙	⊙	
RIDE							⊙		⊙
HI HAT	⊙	⊙							

bionic series

The BIONIC has evolved into an even more exciting and musical range with a new twist on the original Bionic concept, making this series even more contemporary and totally up to date. A truly stunning playing experience for the rock and metal drummer that requires a real musical cymbal. These cymbals are faster and more dynamic, but still retain the power and cut of the original Bionic Classics. The Bionic sets a new standard, simply awesome! Hammered especially deep and wide, then polished to a lustrous golden finish, giving the cymbal added warmth, richness and tonality, the new Bionic Series offers great control and versatility in any musical environment.

main features

// **ALLOY.** Cast Bronze B20.

// **PRODUCTION.** Cast using the Rotocasting® procedure, completely handmade, deep hammered with double punch, hand polished. // **LEVEL.**

Professional. //

APPLICATION. Hard Rock, Rock, Heavy Metal, Fusion.

// **SOUND.** Powerful, bright and warm with many overtones, wide dynamic and sustain.



13" 14" 15" 16" 17" 18" 19" 20" 21" 22"

CRASH				⊙	⊙	⊙	⊙	⊙			
RIDE H/M								⊙	⊙	⊙	
HI HAT	⊙	⊙									

class series

traditional finish

CLASS is UFIP!

This series is the result of more than 80 years of cymbals manufacturing, making Class the most complete and versatile series available. The Class offer more in every respect: more volume, more lively tone, more warmth, more dynamics and more fullness. They cut through in every musical surrounding, from classical music to Jazz, to Rock or Pop.

No other cymbal offers such a broad sound spectrum and so much dynamic potential. The SCS (Sound Control System) allows us to classify every cymbal based on its final weight, using two categories, Medium and Low, giving the drummer a complete coverage of pitches.

	10"	12"	13"	14"	15"	16"	17"	18"	19"	20"	21"	22"
CRASH M/L				⊙		⊙	⊙	⊙	⊙	⊙	L	
FAST CRASH						⊙	⊙	⊙				
CRASH RIDE										⊙	⊙	⊙
RIDE M/L										⊙	⊙	⊙
HI HAT H/M/L	M	M	ML	⊙	ML	L						
WAVE HI HAT		⊙	⊙	⊙								

main features

// **ALLOY.** Cast Bronze B20.

// **PRODUCTION.** Cast using the "Rotocasting"® procedure, completely hand made, cross hammered, hand finished.

// **LEVEL.** Professional. //

// **APPLICATION.** Rock, Hard Rock, Pop, Fusion, Funk, Acoustic, Jazz, Latin, World Music. // **SOUND.** Versatile sound range, powerful but controlled, glassy and brilliant with a wide dynamic range.



class series brilliant finish

The look of the Class Brilliant gives a clear indication of their sound peculiarities: full, warm and deep.

An extremely sophisticated manufacturing process is the secret behind this cymbal range. Originally manufactured similar to the Class Series, the cymbals with the longest sustain and with full bodied mid range tones, are selected and polished by hand, without the use of any chemical substances.

The outcome is a very warm and mellow sounding cymbal, with excellent control of the overtones. The Class Brilliant are ideally suited to Pop, Fusion and Acoustic music.

main features

// **ALLOY.** Cast Bronze B20.

// **PRODUCTION.** Cast using the “Rotocasting”® procedure, completely hand made, cross hammered, hand finished.

// **LEVEL.** Professional.

// **APPLICATION.** Pop, Fusion, Funk, Acoustic, Jazz, Latin. //

SOUND. Fast and dynamic, warm and deep.



13" 14" 15" 16" 17" 18" 19" 20" 21" 22"

CRASH				⊙	⊙	⊙	⊙	⊙		
RIDE								⊙	⊙	⊙
HI HAT	⊙	⊙								

natural series

The Natural Series have been sensitively updated and fine tuned with the purpose of getting back to the main features that have defined this range since its conception.

The New Natural are darker, richer and warmer, they are faster in response and considerably more versatile.

Crashes are lightweight, dark, with fast attack and short decay. The Rides are dry, smooth, easy to control, with frequencies concentrated on the low range of the sound spectrum. The Crash Rides are the perfect compromise between stick definition and light crash qualities. The Hi Hats are full and warm, with a dark chick sound.

	13"	14"	15"	16"	17"	18"	19"	20"	21"	22"
CRASH				⊙	⊙	⊙	⊙	⊙		
CRASH RIDE								⊙	⊙	⊙
RIDE M/L								⊙	⊙	⊙
RIDE SIZZLE								⊙	⊙	⊙
HI HAT M/L	⊙	⊙	L	L						

main features

// **ALLOY.** Cast Bronze B20.

// **PRODUCTION.** Cast using the "Rotocasting"® Procedure. Special heat treatment procedure to reduce the surface tensions. Completely hand made, deep hammered with double punch.

LEVEL. Professional. //

APPLICATION. Jazz, R&B, Fusion, Blues, Country, Acoustic. //

SOUND. Controlled, dark, rich and warm with frequencies concentrated on the low range of the sound spectrum.



EXPERIENCE COLLECTION

From new sound research and cooperation with our endorsers, the Experience Series was born. We are able to react rapidly to an ever evolving and fast paced Musical Industry. Experience Series cymbals are limited in quantity and are available as follows.

— the
experimental
range

EXPERIENCE
COLLECTION
collector ride



18" 20"

—flat ride

A must of the UFIP production, the Flat Rides offer a dry and clear sound with a very controlled response to the sticks. Made in Rotocast B20 bronze, they are available in 18" and 20".

SPLASH 8" 10" 12"
CRASH 14" 16"
HI HAT 10"

—del cajon

Specially designed to provide a complete percussive set together with a Cajon. Made in cast bronze B20 and completely hand hammered, they can be played either by hand, mallets or with brushes. Splashes and Crashes have a fast attack and short decay; the sound is brilliant and dynamic.

20" 21" 22"

—collector ride

These cymbals represent the ultimate in Jazz Rides. Thin with a very dark timbre, encapsulating the sound of cymbals from the Jazz Era of the 40's and 50's. Made in Rotocast B20 bronze, the Collectors Rides are completely hand hammered.

17" 18" 19"

—bell crash

The combination of the raw bell of a Bionic Ride and the light bow of a Class Crash has resulted in an instrument that is truly unique. As a Crash, the cymbal is explosive and crystal clear; used as a Ride has powerful projection due to its cutting and clear bell tones.

HI HAT
15" 16"

CRASH
16" 17" 18" 19" 20"

— blast

A New Concept! After continuous research and development, we have created the new and explosive sound of the Blast Crashes and Hi-Hats. These cymbals have a contemporary sound for today's diverse music market. Hand made in Cast Bronze B20, the main design feature of the Blast cymbals is a double hammering process which incorporates both, traditional and new machine hammering procedures. The result is awesome! Bright and explosive, trashy and oriental with a very fast attack and short decay the crashes, full and powerful, loud and extremely dynamic the Hi-Hats. The Blast cymbals fit into all modern music styles and are perfect for Jungle, Drum and Bass and Electro.

blast — extra dry

Evolving from the amazing sound of the Blast, the new Blast Extra Dry Crashes are still explosive but the unlathed surface and the big hammer marks produce a dry and darker sound. Warm, easy to control, with small "trashy" and oriental overtones, the Blast Extra Dry Crashes are the right choice for many different applications, from Jazz to Pop music, from Rock to Electro music.

CRASH
16" 17" 18" 19" 20"

NEW
X2018

EXPERIENCE
COLLECTION
Blast

EXPERIENCE
COLLECTION
Blast ExtraDry

FX COLLECTION

We have created a dedicated category for our Splashes and Chinas: this is the **EFFECTS COLLECTION**. For a more clear understanding of our proposal, every single cymbal has been selected according to the sound characteristics.

– the
special
sound

— traditional splash

M/L 6" 7" 8" 10" 12"

Our most popular splash. The sound is full, very fast and responsive, perfectly suited for Pop music and for all the acoustic and percussive applications as well.

— brilliant splash

8" 10" 12"

Bright sound, fast response, polished by hand. From 08" to 12". Light weight.

— dry splash

8" 10" 12"

Earthy and dry, with short sustain and immediate attack. Sizes from 08" to 12".

— power splash

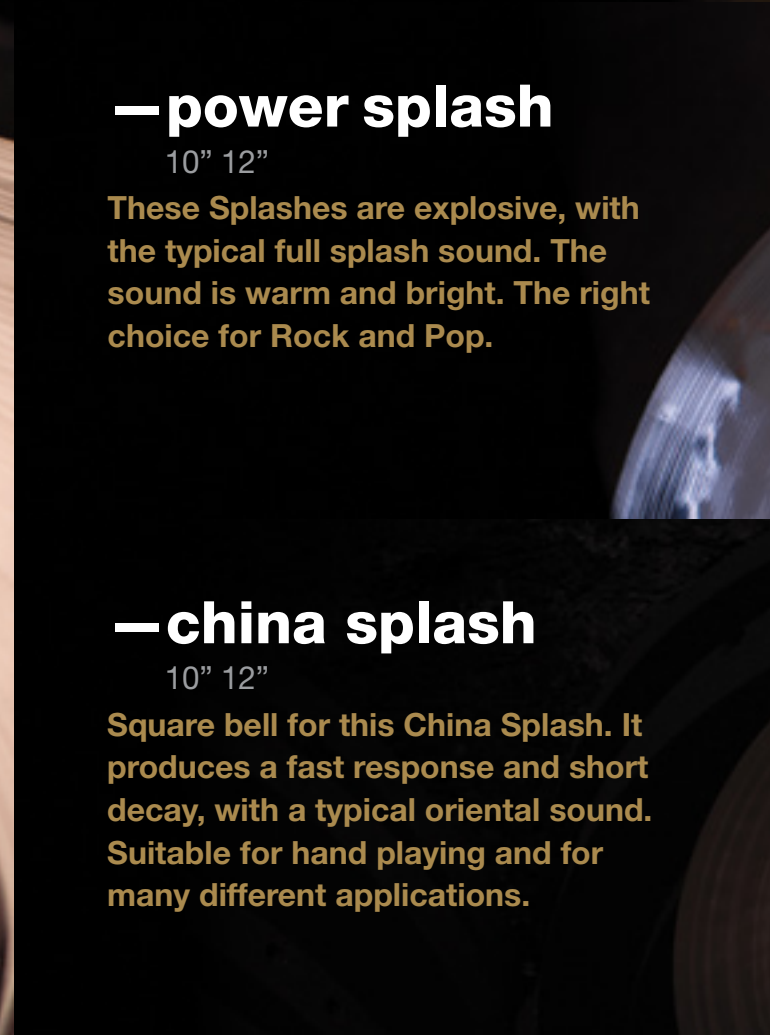
10" 12"

These Splashes are explosive, with the typical full splash sound. The sound is warm and bright. The right choice for Rock and Pop.

— china splash

10" 12"

Square bell for this China Splash. It produces a fast response and short decay, with a typical oriental sound. Suitable for hand playing and for many different applications.



—fast china

14" 16" 18" 20"

They deliver a warm and traditional oriental sound. Fast attack, responsive and medium sustain. Very versatile China.



—swish china

18" 20"

Jazzy swish China; the sound is dark, exotic and warm, responsive and smooth. This China is perfectly suited for soft Ride patterns and for all the Acoustic and Pop applications.



—trash china

16" 18" 20"

Highly responsive and explosive China, with trashy and bright sound. Unique China for many different applications.



—dark china

16" 18" 20"

Low frequencies for these Chinas; they produce a dry and washy sound, with good control and short sustain.



—power china

16" 18" 20"

Explosive and powerful China. The sound is bright, loud, and full. Well suited for Rock applications and for all the situations where a powerful sound is required.



supernova series

The Supernova Series is a result of two years research and development. Over this period we tested many different combinations of materials, weights, shapes, hammering and finishing processes. The result is awesome! Fast response, crystal clear and glassy tone. Though not excessively powerful these cymbals sparkle with a incredibly dynamic and contemporary sound. The range is completed by the introduction of 14" and 16" Chinas.

main features

// **ALLOY.** Sheet Bronze.

// **PRODUCTION.**

Innovative hand hammering procedure using fast rotation, Brilliant Finish, Hand Polished. //

LEVEL. Professional. //

APPLICATION. Hip Hop, Drum and Bass, Funk and other Urban genres.

// **SOUND.** Dynamic, Crystal Clear, Fast Response, Brilliant.



	10"	11"	12"	13"	14"	15"	16"	17"	18"	19"	20"	21"	22"
SPLASH	⊙		⊙										
CRASH					⊙		⊙	⊙	⊙	⊙	⊙		
RIDE											⊙	⊙	⊙
HI HAT				⊙	⊙								
CHINA					⊙		⊙		⊙		⊙		

tiger series

The Tiger Series are pressed cymbals, which are given the same level of attention, care and hand hammering that we use in the production of our Professional Rotocast series, resulting in a high quality mid range product. The Tiger Series are produced using a special surface treatment, giving them their unique look and a sound that is explosive, powerful and rapid in response, proving them to be ideal for Rock, Metal and Punk genres.

main features

// **ALLOY.** Sheet Bronze Cusn 8. // **PRODUCTION.** Special hardening Procedure, completely hand hammered, finished by hand. // **LEVEL.** Semi Professional, Intermediate. // **APPLICATION.** Hard Rock, Heavy Metal, Punk, Rock. // **SOUND.** Explosive, Powerful, Quick Response with lasting Sustain.



10" 11" 12" 13" 14" 15" 16" 17" 18" 19" 20" 21" 22"

	10"	11"	12"	13"	14"	15"	16"	17"	18"	19"	20"	21"	22"
SPLASH	⊙		⊙										
CRASH					⊙		⊙	⊙	⊙	⊙	⊙		
RIDE											⊙	⊙	⊙
HI HAT				⊙	⊙								
CHINA							⊙		⊙		⊙		

Available in configuration set with cymbal bag included
 SET A (16" 20" 14"HH) | SET B (16" 18" 13"HH)

m8 series

M8 Series cymbals are made using brass blanks that are produced to our specifications. Though M8 is an entry level cymbal, it is still treated with the highest quality standards and hand crafted production processes to ensure a product worthy of the UFIP name. A balance between cost and quality, the M8 Series can be considered a good alternative to other mass produced cymbals available on today's market.

main features

- // **ALLOY.** Sheet Brass.
- // **PRODUCTION.** Hand hammered, hand finished.
- // **LEVEL.** Entry Level.
- // **APPLICATION.** All Musical Genres.
- // **SOUND.** Clear, Powerful, Complete and Dynamic.



	12"	13"	14"	15"	16"	17"	18"	19"	20"	21"	22"
SPLASH	⊙										
CRASH			⊙		⊙		⊙				
RIDE									⊙		⊙
HI HAT		⊙	⊙								

Available in configuration set with cymbal bag included
 SET A (16" 20" 14"HH) | SET B (16" 18" 13"HH)

MARCHING & SYMPH ONIC



	13"	14"	15"	16"	17"	18"	19"	20"	21"	22"
MARCHING CAST BRONZE	⊙	⊙	⊙	⊙	⊙	⊙				
MARCHING LIGHT BRONZE	⊙	⊙								
MARCHING BRASS	⊙	⊙								
SYMPHONIC SERIES L/M/H		⊙	⊙	⊙	⊙	⊙	⊙	⊙	⊙	⊙



—marching cast bronze

Made from the same B20 bronze alloy as the Symphonic Series but finished in a different kind of hammering process and surface type. These cymbals are mainly used in marching settings and offer precise attack and an unexpected acoustic presence at highest level.

—marching light bronze

Marching Light Bronze cymbals are lightweight instruments that offer a powerful sound. They are carefully matched in pairs selected from our new B12 alloy. This makes them specially suitable for the use in youth orchestras and community bands.

—marching brass

Made on a basis of rolled brass, they guarantee an excellent quality level in comparison to the price. Entry level instruments but made with the same care and attention as our professional lines. They come with leather straps.

—symphonic

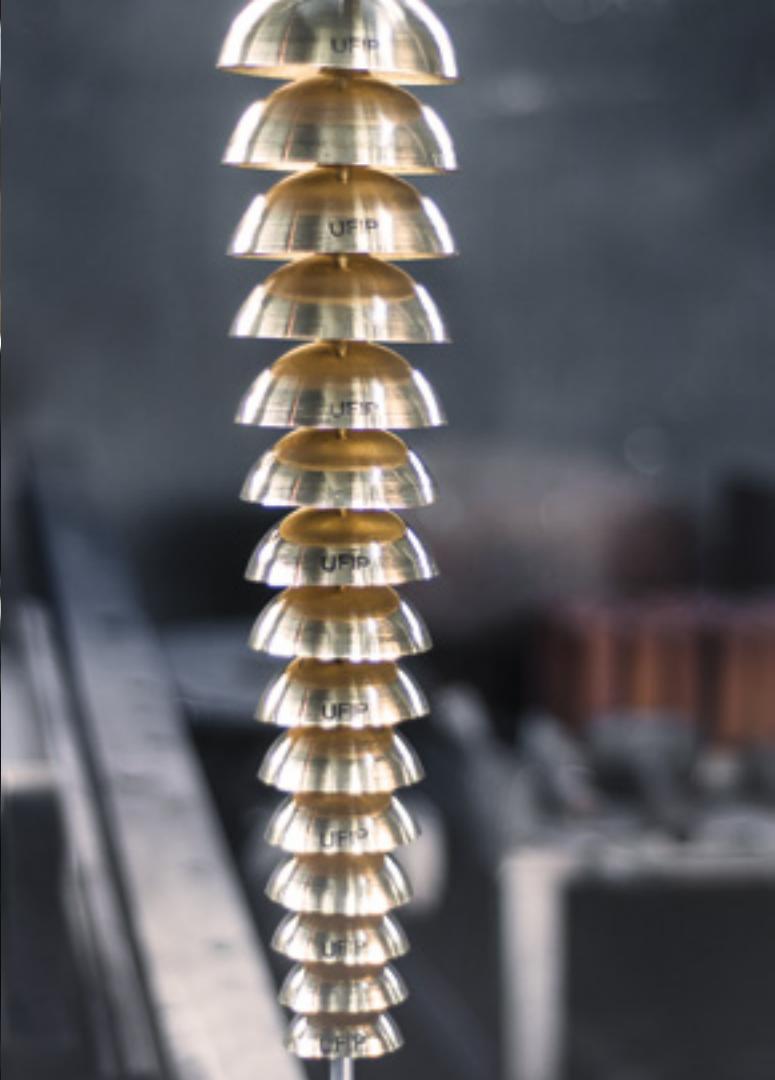
The professional B20 Symphonic cymbals offer brilliance in sound and responsiveness, from a low sizzle to a full volume solo crash. Carefully matched according to weight and acoustic properties, they are offered in 3 weight categories: French (Light), Wien (Medium), German (Heavy).

SOUNDS & PERCUSSIONS

Dedication to detail is the main concern of every UFIP cymbal maker. Even most of the small percussion instruments are made using UFIP's unique and precious bell bronze alloy. Be it the legendary Ice Bells or a pair of Tibetan Bells. No wonder they are so much sought after!



—ogororo



—ximbau

small
medium
large

—bell tree

—ice bell

7" 8"

—wind chimes

25 tubes
41 tubes
52 tubes



—brass tube

small
medium
large

—six tree

—three disc

—three bell



—tibetan bells



—burma bells



—hat clang

Made in cast bronze, the Hat Clang can be played both, on the Hi Hat and on the Rides.



—snare clang

Special effect, made by a double B20 ring, with rivets and little cymbals, to be used on the snare drum.

GONGS & TAM TAMS

UFIP Tam Tams and Gongs are famous for their important role in concert music and in music therapy. Our Tam Tams are made in the traditional way of bell bronze. Currently they are available in sizes ranging from 20" to 28" with different sound characteristics. We also make a series of sheet bronze and sheet brass Tam Tams and Gongs available in different sizes and different finishes.

TTF20 20"
TTF24 24"
TTF28 28"

—cast bronze
tam tam





Traditional finish



—symphonic brass tam tam

TTL32 32"
TTL36 36"
TTL40 40"



—symphonic brass gong

G32 32"
G36 36"
G40 40"

Available also with bell



Tiger finish

—gong b8

G20 20"
G24 24"
G28 28"

Available also in Traditional finish

TUNED INSTRUMENTS

Our company produces a complete variety of tuned percussion instruments, like crotales, chimes, and bell plates.



— crotales

complete octaves
C4/C5 - C5/C6



— flat bells

complete octaves
C3/C4 - C4/C5 - C5/C6



— tubular bells

complete octaves
C3/C4 - C4/C5

WE ARE
SOCIAL
PEOPLE

UFIP EARCREATED CYMBALS

Via Galileo Galilei, 20 | 51100 Pistoia, Italy
Tel. +39 0573 532066 | Fax +39 0573 532202
info@ufip.it



www.ufip.it

UFiP

EARCREATED CYMBALS

▶ PLAY THE DIFFERENCE.

www.ufip.it